



# annettechnologies

**INDIA:** 5, Evergreen Industrial Estate,  
Shakti Mills Lane, Mahalaxmi, Mumbai 400011.  
Tel: +91-22-2491-5383 | Fax: +91-22-2491-5387

**USA:** 303 Park Avenue South,  
Ste. 1101, New York, NY 10010-3601.  
Tel: +1-866-486-8567 | Fax: +1-866-484-6939

**Web:** www.annettech.com | **E-mail:** JDE@annettech.com



## ORACLE JD Edwards TECHNOLOGY PRACTICE GROUP

### COMPANY PROFILE – BRIEF

Annet Technologies is a REAL ESTATE focused Technology and Business Process Outsourcing (BPO) firm at the forefront of the IT business solutions field; transforming enterprises with true vertical business expertise in the Real Estate industry by supporting ERP implementation, integration, development, customization and consulting initiatives.

We have built a strong ERP practice, and offer a full range of JD Edwards Solutions using best practices for consulting, implementation, upgrade, support and maintenance services. With strong "Real Estate" domain focus, we easily coalesce industry-specific needs with JD Edwards expertise and other technology needs. Our Real Estate (RE) customers utilize our services & solutions to save themselves time and money.



### JD Edwards PRACTICE GROUP

Our practice group provides the following services for JD Edwards ERP:

#### CONSULTING

Our business experts and technical architects with many years of experience have enabled us to deliver strong & value added consulting solutions to our Real Estate clients.

We have significant experience in designing and implementing JD Edwards solutions. Our pool of resources are skilled with advanced knowledge of:

- JD Edwards Tools
- JD Edwards Event Rules
- Integration Tools
- Reporting and Document
- Process Automation Solutions

#### IMPLEMENTATION

We help you analyze your ERP requirements, re-define the processes needed to achieve the organizational objectives and gain the desired benefits from your implementation.

Backed by technology and robust implementation methodology along with tools, we help manage JD Edwards programs from 'end-to-end' including

transition from legacy systems or multiple application environments to JD Edwards.

#### UPGRADE

Our upgrade methodology ensures efficient, quick and cost effective upgrades, which enable you to lower the cost of customizations while staying abreast of functionality of the application.

#### SUPPORT

Having sufficient experience in supporting existing JD Edwards systems in Production, we are able to offer:

- 24X7 support
- Application enhancements
- Application administration
- Performance tuning of Application
- Reports design and development
- Quality assurance

#### INTEGRATION & MAINTENANCE

Our rich experience coupled with a clear understanding of JD Edwards solution, allow us to offer robust integration capabilities that allow us to design, develop, build systems and bring together disintegrated applications, irrespective of vendors. We

help to integrate JD Edwards with other applications through API/XPI, XML, Table Conversion, Java and Corba.

#### VALUE ADDED SERVICES

Apart from standard JD Edwards services, we offer our customers with various value added services such as Quality Assurance.

We offer cost effective quality assurance solutions for planning, conducting and providing reliable and efficient evaluations and assessments of different attributes and capabilities of JD Edwards.

#### DELIVERY MODEL

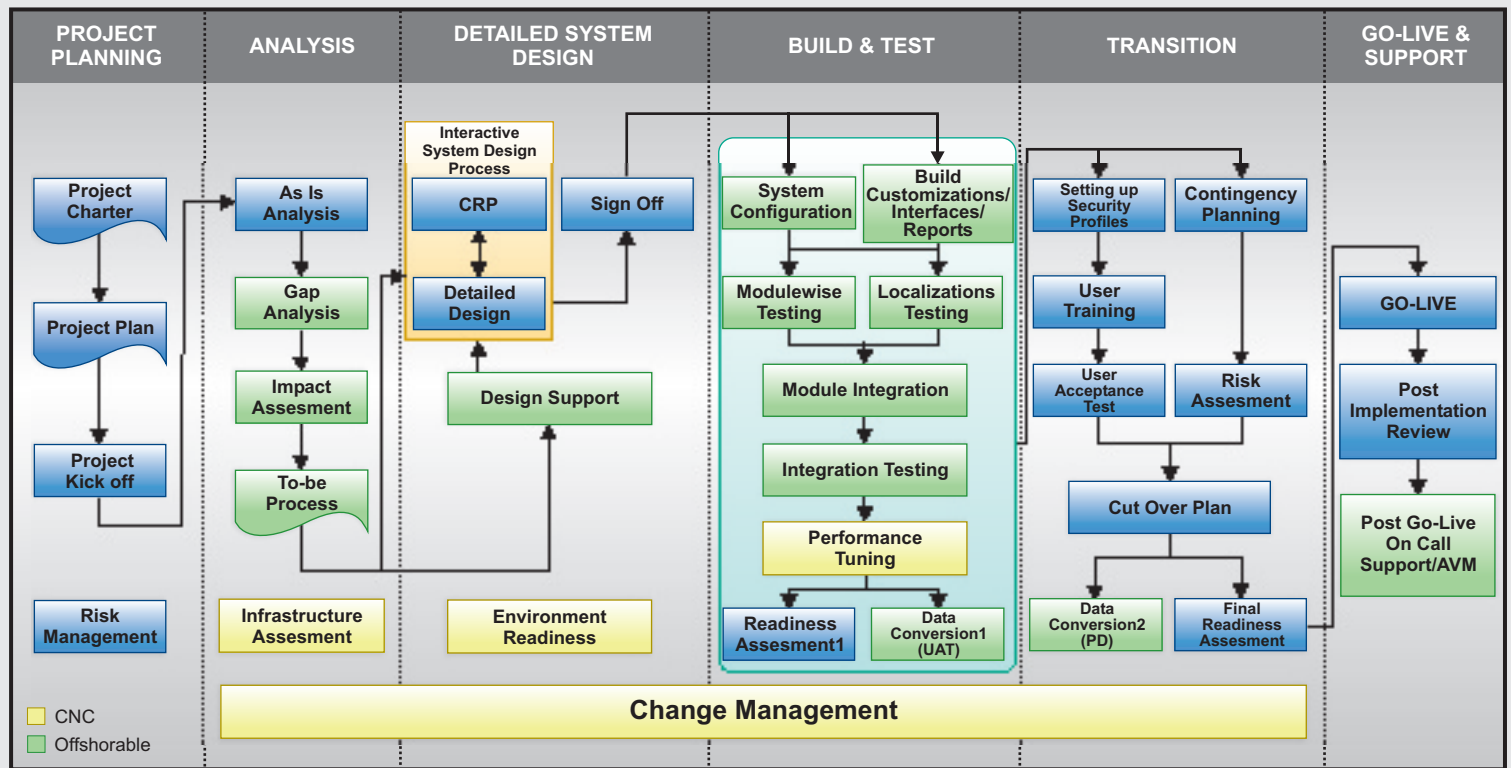
Our onsite-offshore delivery model for executing JD Edwards projects, includes some of the major benefits:

- Savings due to reduced project cost
- Reduced project lifecycles
- Extension of your organization
- Scalability
- Stringent Quality processes and high Process maturity

## ANNET TECHNOLOGIES

*Technology for Real Estate. JD Edwards Solutions Specialists.*

## OUR JD Edwards PROJECT PROCESS CYCLE



## JD Edwards SKILL SETS

### JD Edwards WORLD

- Foundation
- Financial Management

- Project Management
- Quality Management

- HomeBuilder Management

### JD Edwards EnterpriseOne

- Real Estate Management
- Asset Lifecycle Management
- Capital Asset Management

- Financial Management
- Project Management
- Supply Management

- Customer Relationship Management
- Advanced Real Estate Forecasting

### PLATFORMS

- Microsoft Windows (x86) 32-Bit
- AIX (IBM pSeries)

- HP-UX
- SUN Solaris

- LINUX (x86) 32-Bit
- OS/400 (IBM iSeries)

### OTHER CONCEPTS / TOOLS

- RPG/400
- XML
- RDBMS Concepts

- CL/400
- SQL/400

- Crystal Report
- UML

## WHY SHOULD YOU CHOOSE ANNET FOR YOUR REAL ESTATE - JD Edwards IMPLEMENTATION?

- **Real Estate Systems Specialists:** Qualified business consultants having domain expertise in Real Estate
- **Experience:** Successful completion of JD Edwards / Oracle projects in Real Estate Industry
- **Capability:** Experienced and professional Consultants with Real Estate Industry exposure.
- **Reliability:** Contingency team personnel 3:1. No Knowledge Loss. 24x7 Customer Support.
- **Quality:** ISO 9001:2000 certified / CMM level 3 assessed (level 4 in progress). Guidelines / Templates / Checklists.
- **Resource Maturity:** Average employee experience 5+ years. Continued skill augmentation with proper training.
- **Efficiency:** 5.4 Sigma / 94% on time delivery.

## ANNET TECHNOLOGIES

Technology for Real Estate. JD Edwards Solutions Specialists.